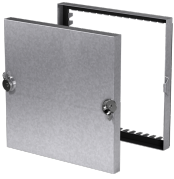




SKU  
CAD-10-16X16

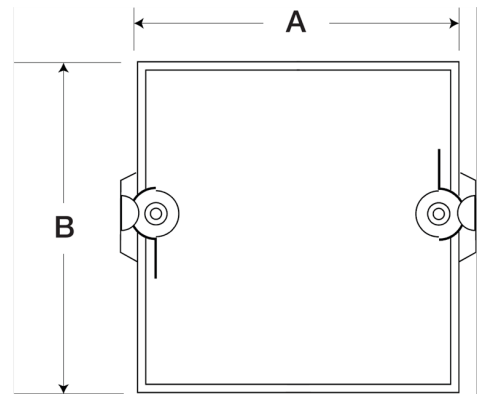
Nombre del Proyecto:  
Marca:  
Enviado por:  
Fecha: 11/13/2019

## Cam style access door, 16 In Sq



Access doors are designed for use in low to medium pressure duct systems. They provide a durable, practical, and inexpensive means of gaining access to damper components inside the ductwork.

- Plated steel latches with galvanized steel strikes



A	B
16 in	16 in

### Características de funcionamiento

No hay curva del ventilador disponible.

### Características de Construcción

Frame Material	Galvanized Steel
Frame Gauge	22
Door Panel Construction	Galvanized Steel
Insulation	1 in fiberglass