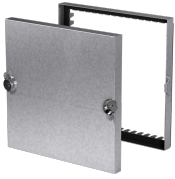




SKU
CAD-10-14X14

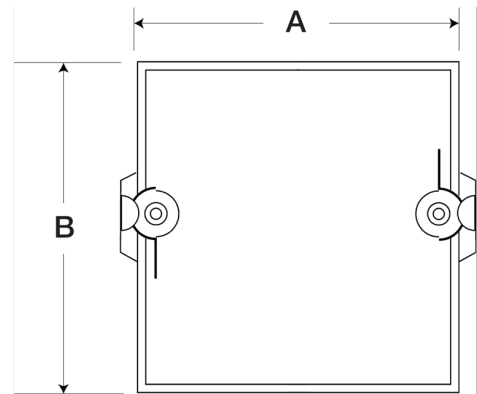
Nombre del Proyecto:
Marca:
Enviado por:
Fecha: 07/15/2020

Cam style access door, 14 In Sq



Access doors are designed for use in low to medium pressure duct systems. They provide a durable, practical, and inexpensive means of gaining access to damper components inside the ductwork.

- Plated steel latches with galvanized steel strikes



A	B
14 in	14 in

Características de funcionamiento

No hay curva del ventilador disponible.

Características de Construcción

Frame Material	Galvanized Steel
Frame Gauge	22
Door Panel Construction	Galvanized Steel
Insulation	1 in fiberglass

California Residents

⚠ WARNING

This product can expose you to chemicals including cadmium used in the processing of corrosion resistant metal and fasteners, which is known to the State of California to cause cancer and birth defects or other reproductive harm. For more information visit www.P65Warnings.ca.gov